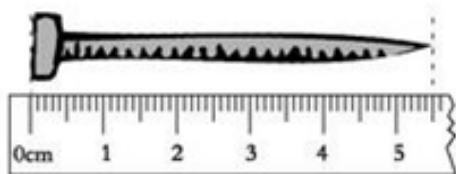


Question 1 (1 point): Report the Length of the nail below



5.51 cm (you always report one more value than what you have a marking for)

Question 2 (2 points): Fill out the table below

Number	Number of Significant Figures
3072	4
0.0045	2
4500	infinite
10.0	3

Question 3: (2 points) Density = mass ÷ volume. Calculate the density using the rules for significant figures at every step for 6.05 grams of a metal that is placed into 5.00 mL causing the volume to rise to 6.35 mL.

$$\frac{6.05 \text{ g}}{(6.35 - 5.00) \text{ mL}} = 4.48 \text{ g/mL}$$